

Spindelkulturen bis 4 m Höhe

Weitere
Empfehlungen



ID 90 8,0–15,0 bar
IDK 90 8,0–15,0 bar
AD 90 2,0–15,0 bar
TR 60/80 8,0–15,0 bar

Fungizid



ID 90 8,0–15,0 bar
IDK 90 8,0–15,0 bar
AD 90 2,0–15,0 bar
TR 60/80 8,0–15,0 bar

Insektizid



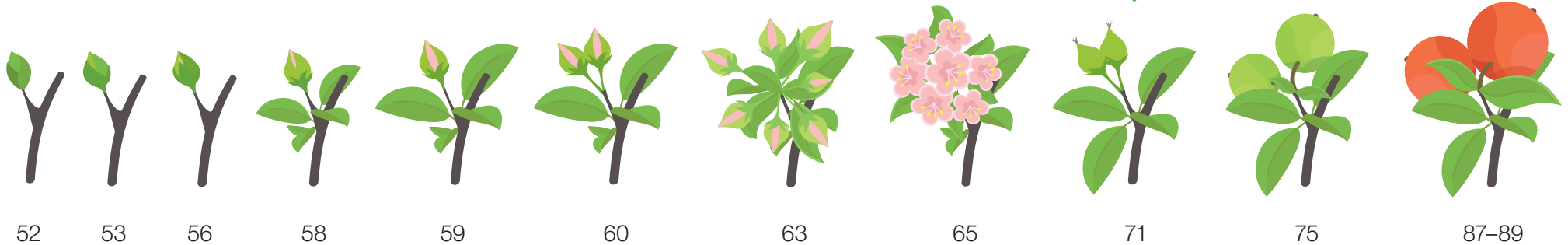
IS 80 4,0–8,0 bar
IDKS 80 1,5–3,0 bar
OC 1,5–2,5 bar

Herbizid



IDK 90 8,0–15,0 bar
AD 90 2,0–15,0 bar
TR 60/80 8,0–15,0 bar

Wachstumsregler



52

53

56

58

59

60

63

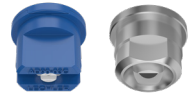
65

71

75

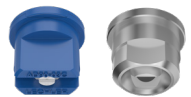
87–89

BBCH Entwicklungsstadium



AD 90 2,0–15,0 bar
ST 652 8,0–30,0 bar

Fungizid



AD 90 2,0–15,0 bar
ST 652 8,0–30,0 bar

Insektizid

